

# Infrared Touch Systems



**Touch the Future**

---

[www.teamist.com](http://www.teamist.com)

## ISTTouch Infrared Touch Screen USB Driver

The USB Device Drivers must be installed prior to the UPDD Device Drivers.

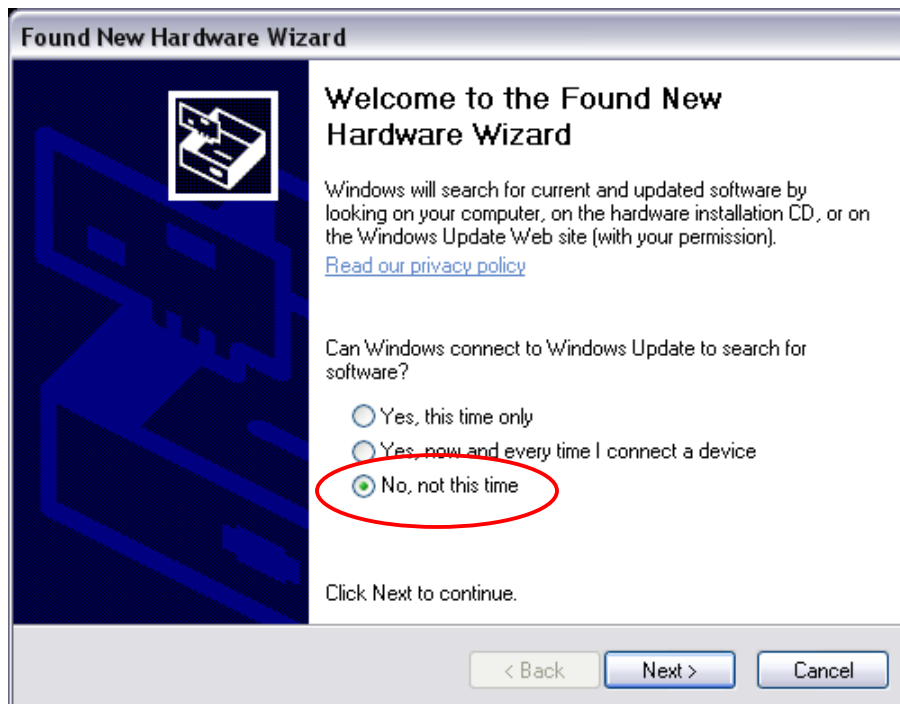
The USB Device Drivers are located on the supplied installation disc inside the CP210X folder. Double click the ISTVCPInstaller executable file to begin installation.



If you receive this error message click 'Continue Anyway'



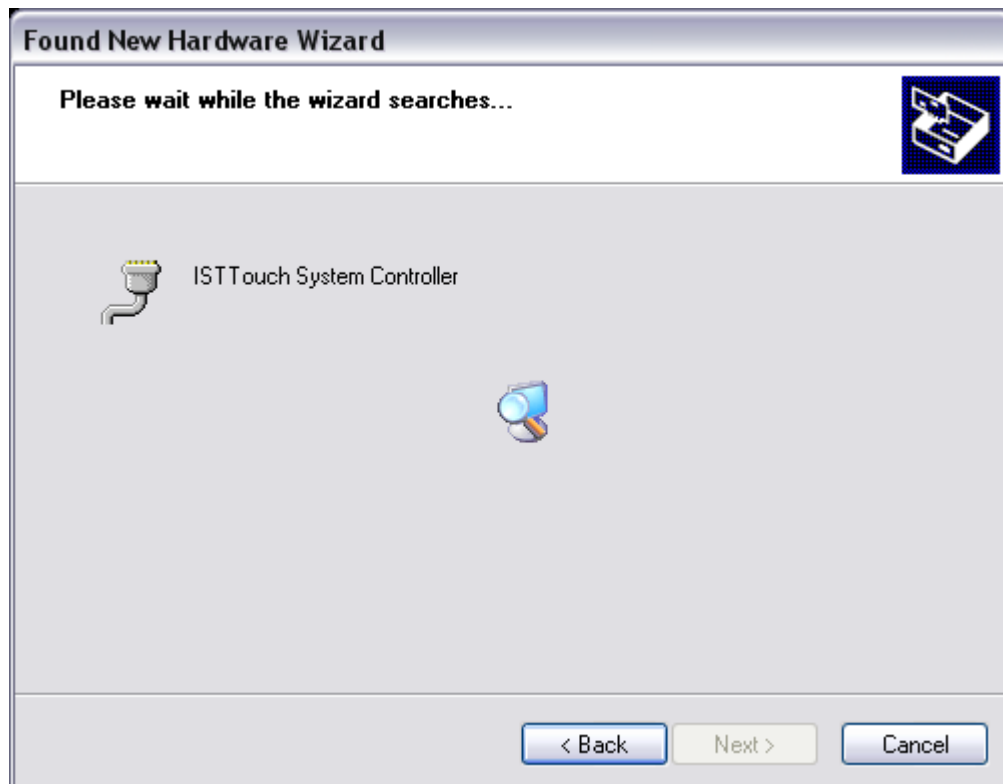
Once the files have been copied plug the ISTTouch system into the USB port and power up the unit. Windows should then detect the new hardware and begin the 'Found New Hardware Wizard'



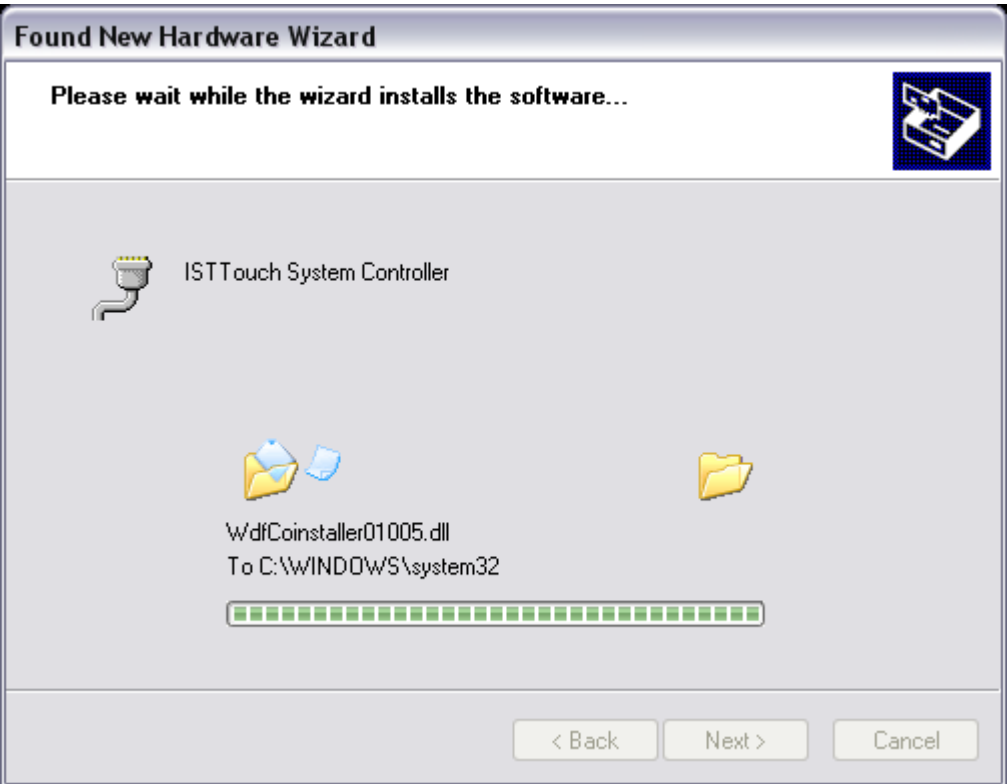
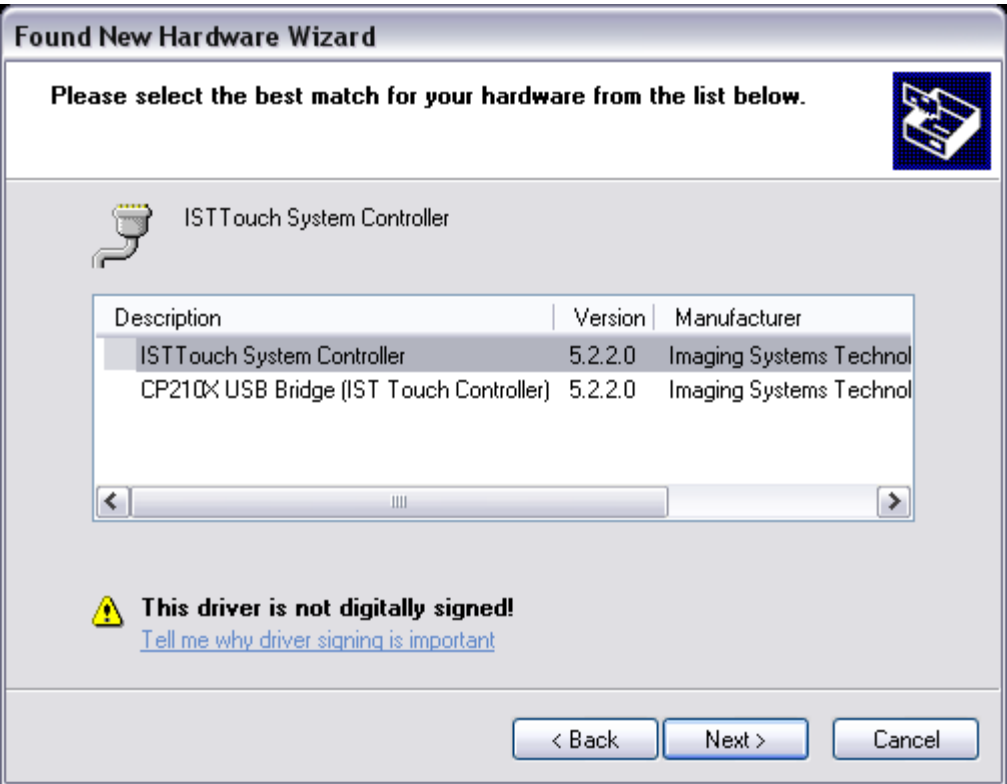
When asked if windows should connect to Windows Update select: 'No, not this time'



Continue through the wizard as shown.



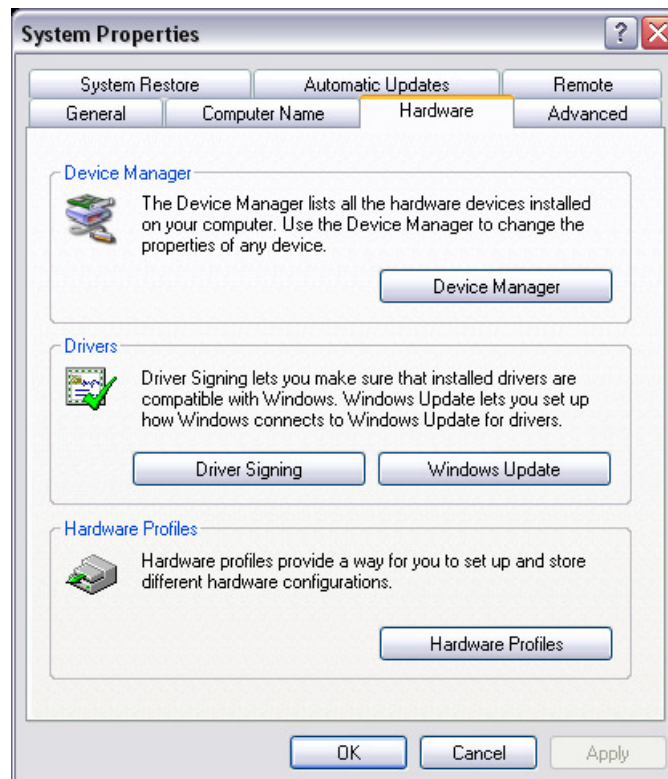
Select the ISTTouch System Controller from the list and continue.

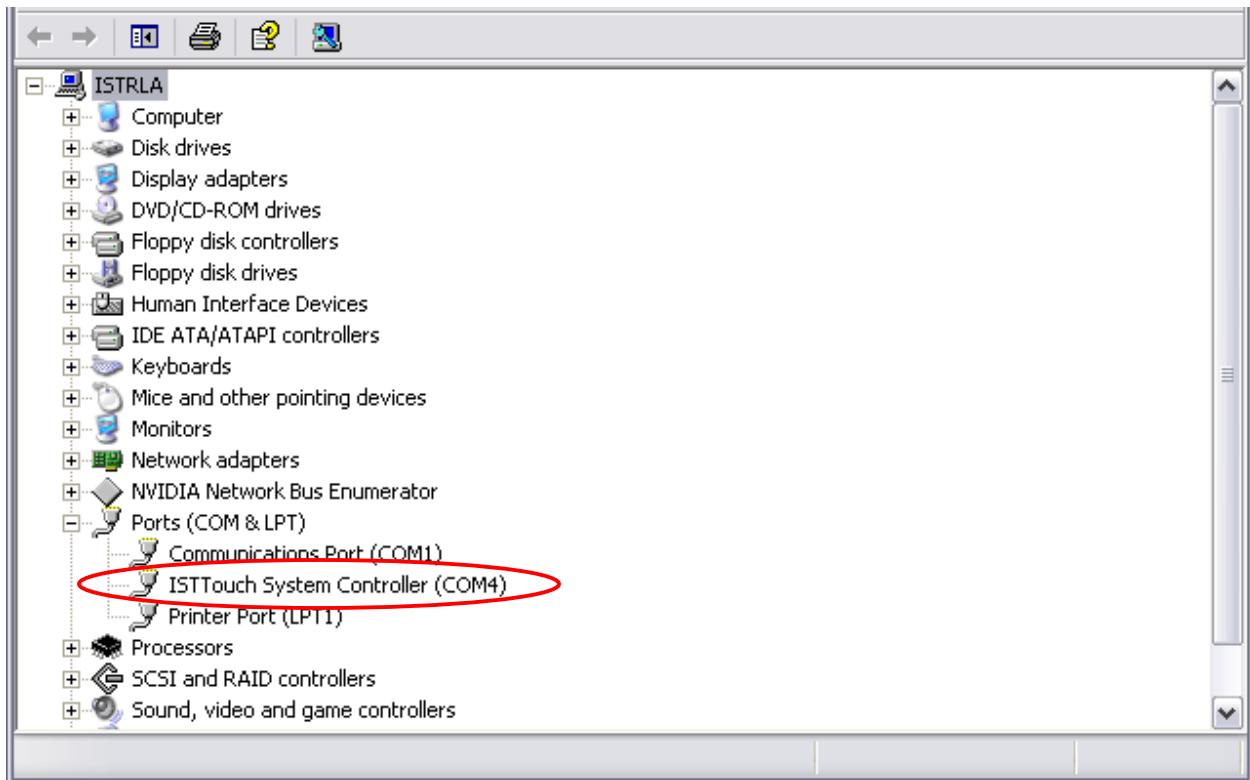




The USB drivers have now been installed.

Next, verify the COM port number in the Device Manager before installing the UPDD drivers.





Then when installing the UPDD driver be sure to select the correct COM port.

