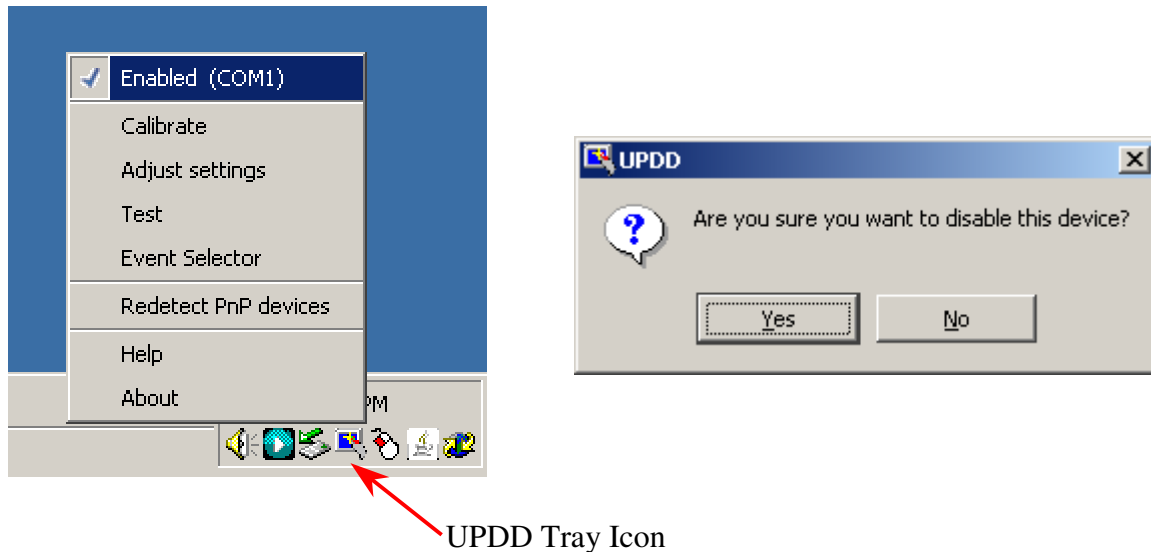


ISTTOUCH Screen DVD Mode to PC Mode Conversion

If you have already installed the IST Touch Screen drivers you will need to disable them to use the windows Hyperterminal to communicate with the touch panel. This can be done by clicking the UPDD tray icon and selecting the 'Enabled' option. The program will then prompt you to confirm your selection.



Once the drivers have been turned off, unplug the power to the touch panel and plug it back in to cycle power.

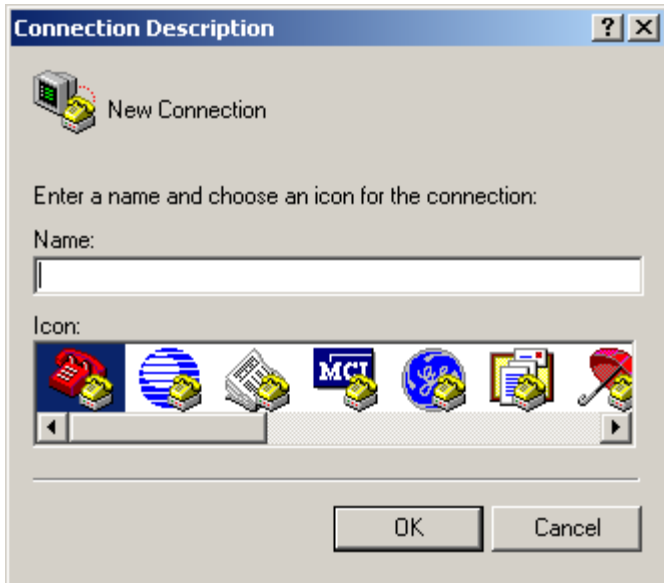
A copy of Hyperterminal that is already configured to work with the touch panel is located on the IST Driver disk, and can be opened by double clicking the icon.



If you do not have the driver disk you can access and configure Hyperterminal by following these steps.

Start>Programs>Accessories>Communications>Hyperterminal

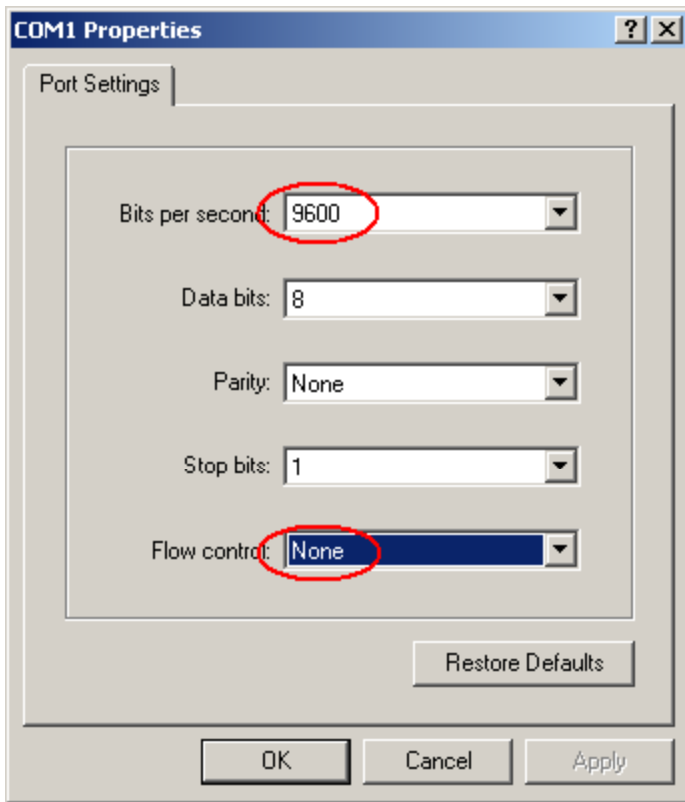
Once the program is opened this should be the first window that you see.



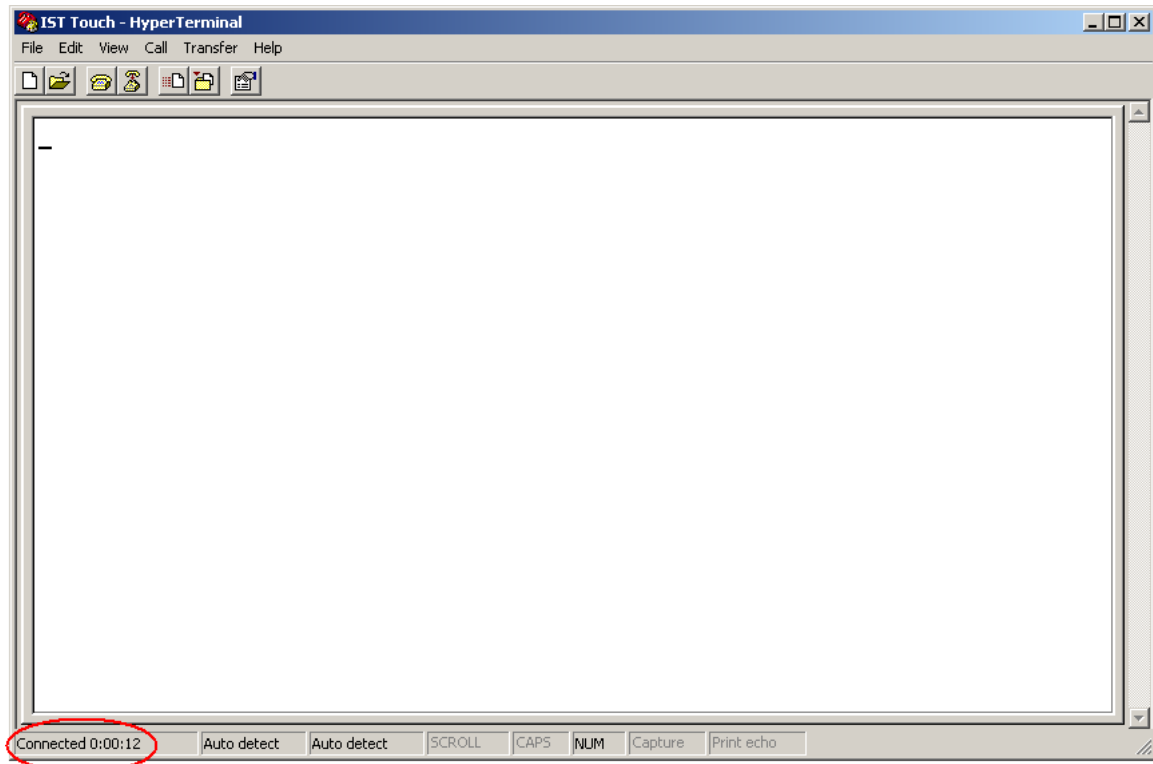
If instead of this you get a window that asks if you want to make Hyperterminal your default telephony device just answer no and then you will get the Connection Description window. You can name the connection anything you want, but you cannot leave it blank. Press OK, and then you will get this.



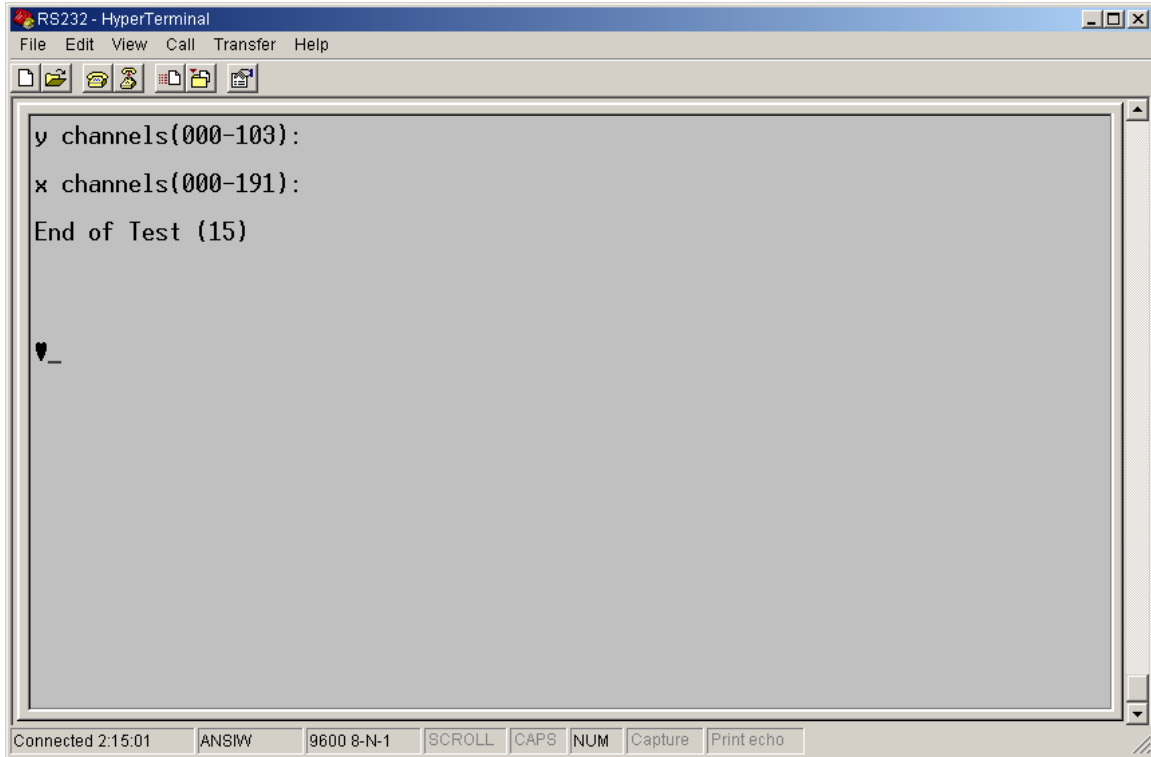
COM1 is the default RS232 port but if you are using a USB adapter you may need to check you port settings to see which port the Touch Panel is connected to.



Make sure that you COM port settings match what is above, and press OK. Then you will get the open Hyperterminal window.



Cycle the power to the touch panel to reinitialize communications. You should then see the following screen.

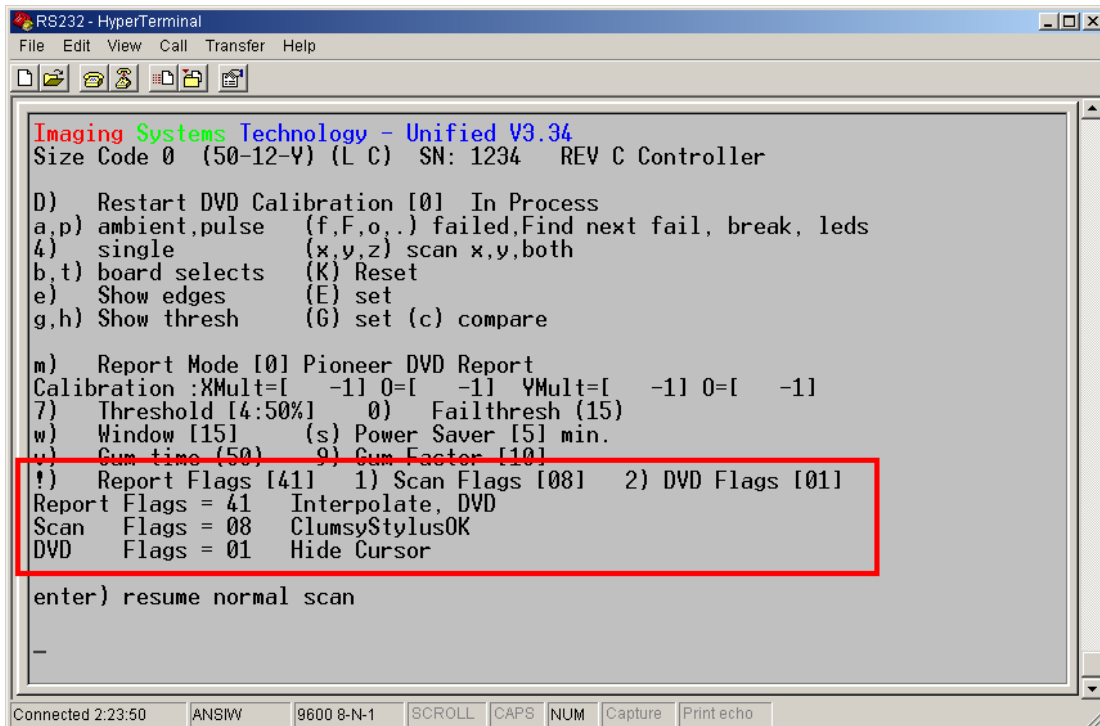


```
RS232 - HyperTerminal
File Edit View Call Transfer Help

y channels(000-103):
x channels(000-191):
End of Test (15)

Connected 2:15:01 ANSIW 9600 8-N-1 SCROLL CAPS NUM Capture Print echo
```

Once you have communication with the touch panel, press ESC and then T (not at the same time, but one after the other) three times. ESC and then T, ESC and then T, ESC and then T. This will open the ISTTOUCH firmware menu.



```
RS232 - HyperTerminal
File Edit View Call Transfer Help

Imaging Systems Technology - Unified V3.34
Size Code 0 (50-12-Y) (L C) SN: 1234 REV C Controller

D) Restart DVD Calibration [0] In Process
a,p) ambient,pulse (f,F,o,..) failed,Find next fail, break, leds
4) single (x,y,z) scan x,y,both
b,t) board selects (K) Reset
e) Show edges (E) set
g,h) Show thresh (G) set (c) compare

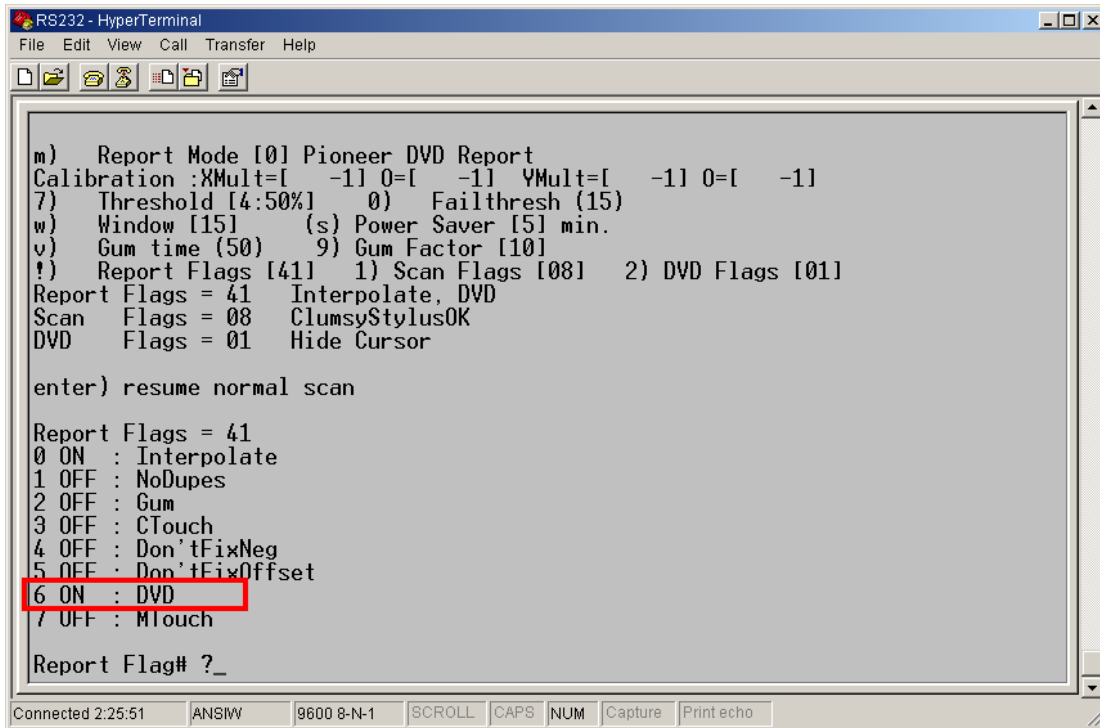
m) Report Mode [0] Pioneer DVD Report
Calibration :XMult=[ -1] O=[ -1] YMult=[ -1] O=[ -1]
7) Threshold [4:50%] 0) Failthresh (15)
w) Window [15] (s) Power Saver [5] min.
v) Cum time (50) 9) Cum Factor [10]

!) Report Flags [4] 1) Scan Flags [08] 2) DVD Flags [01]
Report Flags = 41 Interpolate, DVD
Scan Flags = 08 ClumsyStylusOK
DVD Flags = 01 Hide Cursor

enter) resume normal scan

Connected 2:23:50 ANSIW 9600 8-N-1 SCROLL CAPS NUM Capture Print echo
```

You should notice that the report flags are set for DVD usage. By pressing ! (shift + 1) the report flags menu will open.



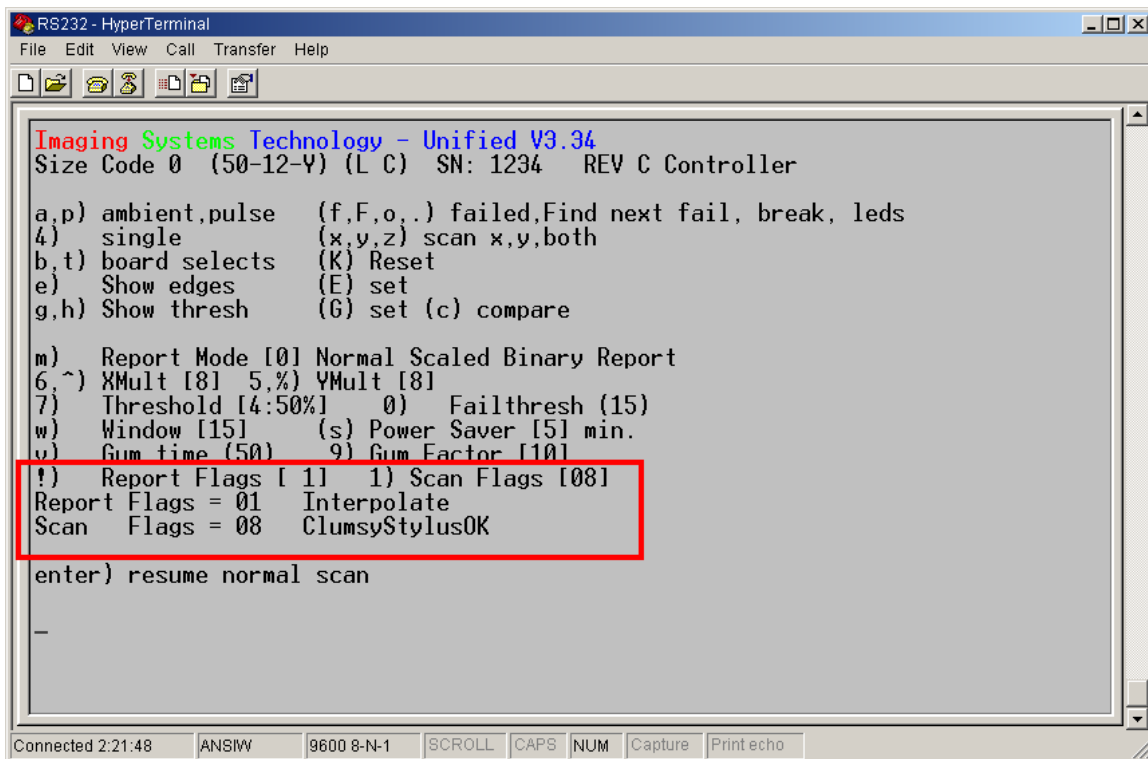
```
RS232 - HyperTerminal
File Edit View Call Transfer Help
m) Report Mode [0] Pioneer DVD Report
Calibration :XMult=[ -1] O=[ -1] YMult=[ -1] O=[ -1]
7) Threshold [4:50%] 0) Failthresh (15)
w) Window [15] (s) Power Saver [5] min.
v) Gum time (50) 9) Gum Factor [10]
!) Report Flags [4] 1) Scan Flags [08] 2) DVD Flags [01]
Report Flags = 41 Interpolate, DVD
Scan Flags = 08 ClumsyStylusOK
DVD Flags = 01 Hide Cursor

enter) resume normal scan

Report Flags = 41
0 ON : Interpolate
1 OFF : NoDupes
2 OFF : Gum
3 OFF : CTouch
4 OFF : Don'tFixNeg
5 OFF : Don'tFixOffset
6 ON : DVD
7 OFF : MTouch

Report Flag# ?_
Connected 2:25:51 ANSIW 9600 8-N-1 SCROLL CAPS NUM Capture Print echo
```

Turn DVD off by pressing 6, then the report flags will look like this.



```
RS232 - HyperTerminal
File Edit View Call Transfer Help
Imaging Systems Technology - Unified V3.34
Size Code 0 (50-12-Y) (L C) SN: 1234 REV C Controller

a,p) ambient,pulse (f,F,o,.) failed,Find next fail, break, leds
4) single (x,y,z) scan x,y,both
b,t) board selects (K) Reset
e) Show edges (E) set
g,h) Show thresh (G) set (c) compare

m) Report Mode [0] Normal Scaled Binary Report
6 ^) XMult [8] 5,% YMult [8]
7) Threshold [4:50%] 0) Failthresh (15)
w) Window [15] (s) Power Saver [5] min.
v) Gum time (50) 9) Gum Factor [10]
!) Report Flags [1] 1) Scan Flags [08]
Report Flags = 01 Interpolate
Scan Flags = 08 ClumsyStylusOK

enter) resume normal scan

-
Connected 2:21:48 ANSIW 9600 8-N-1 SCROLL CAPS NUM Capture Print echo
```

The panel is now set to work in PC mode. Simply restart the drives by checking the enabled box in the UPDD settings and calibrate according to instructions.

If you have an questions please contact customer service at 1-866-TEAM-IST ext. 123